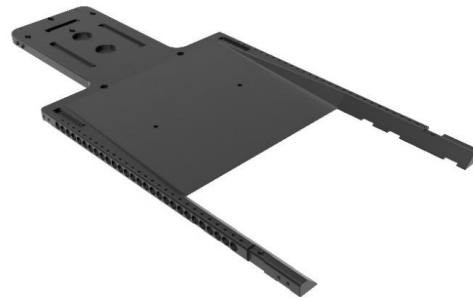


## SBRT SOLUTION SHORT BASE PLATE



Article No. : **32317/14**

### A. GENERAL PRODUCT INFORMATION

The products referred to in these instructions are medical devices, used for patient positioning and immobilization in radiation therapy.

This product may only be used in combination with Orfit immobilisation products. Orfit prohibits the use of unauthorised third-party products in conjunction with its own products.

### B. PRODUCT DESCRIPTION

This glass fiber BASE PLATE is a basic element of the SBRT package. It is used in combination with the SBRT RESPIRATORY SYSTEM, the INDEXABLE KNEE and FOOT SUPPORT, the ARM REST, the RAYCAST HIGH PRECISION HEAD SUPPORTS and BLOCKS & WEDGES, the EFFICAST PRE-CUTS and the VACUUM BAGS to form a reproducible patient positioning and immobilization device. Information on these other parts can be found in the respective 'instructions for use' and on [www.orfit.com](http://www.orfit.com).

### C. PRECAUTIONS FOR USE

This is a fragile product, please handle with care. Always place the base plate on a flat surface. Clear the treatment table of any debris before positioning the base plate.

Always fix the base plate securely to the treatment couch before positioning a patient. More information on how to fix this base plate to a couch top can be found on our website <http://www.orfit.com/en/fixation-devices>.

The glass fibre base plate is constructed to be lightweight. When handled roughly, it may get damaged and fibres may come off. When this happens, stop using the base plate to prevent fibres from getting in contact with the patient's or user's skin. Contact your distributor.



**Do not use the base plate in overhang !  
Keep fully supported on the treatment couch to prevent tilting !**

### D. STORAGE

Always store the product in a safe place to prevent it from getting damaged. Take care not to damage the edges of the plate when storing it in an upright position. Prevent hard objects from falling onto the plate.

Store the base plate between +10°C (50°F) and 40°C (122°F).

### E. PROPERTIES

#### E.1. Physical Properties

##### Note:

It is prohibited to make alterations to this text without prior approval from Orfit Industries. RAYCAST® is a registered trademarks of ORFIT Industries.

Dimensions: L 1150 mm x W 540 mm x H 30 mm  
Weight: 4.5 kg

Made from a foam core with glass fibre top and bottom surfaces. Edges are epoxy resin. Other inserts are made from hardwood/epoxy.

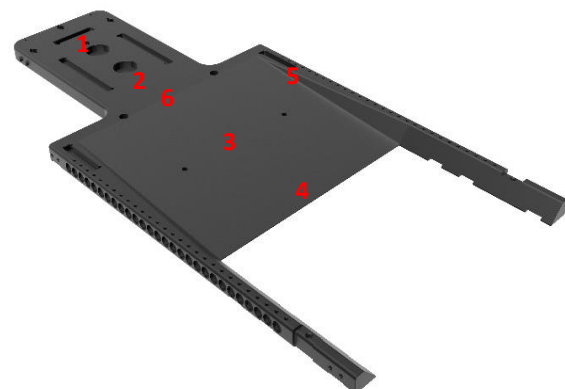
This product is made entirely of electrically non-conductive, non-metallic and non-magnetic materials and is MRI safe.



#### E.2. Dosimetric Properties

The attenuation factor ( $\pm 0,15\%$ ) for the Base Plate is as follows:

Location	Attenuation at 6 MV ( $\pm 0.15\%$ )	Attenuation at 15 MV ( $\pm 0.15\%$ )	mm H2O equivalence ( $\pm 0.1$ mm)
1	2.0 %	1.2 %	5
2	2.0 %	1.4 %	5
3	1.7%	1.0 %	4
4	1.1 %	0.8 %	2
5	15.9 %	10.9 %	39
6	2.1 %	1.3 %	5



Note: Use these numbers as a guidance only. Perform the measurements again in your department to verify these results.



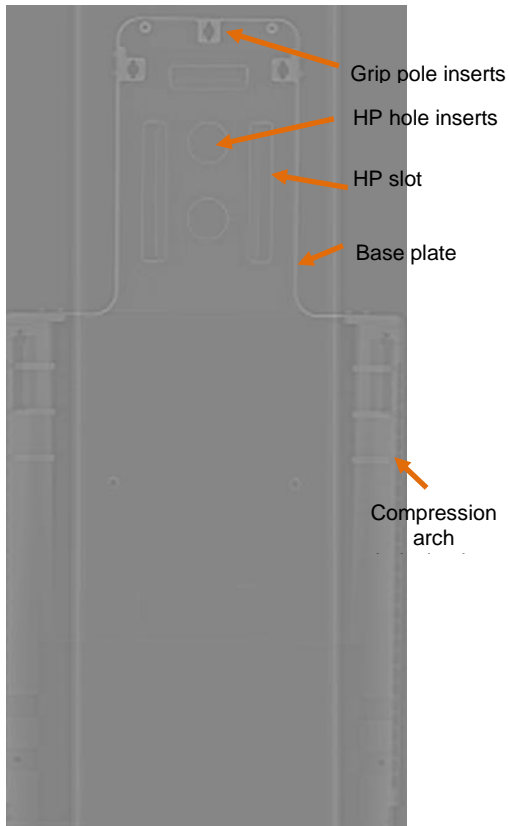
**ORFIT INDUSTRIES**  
Vosveld 9A | B-2110 Wijnegem | Belgium  
T (+32) (0)3 326 20 26  
[welcome@orfit.com](mailto:welcome@orfit.com)

[www.orfit.com](http://www.orfit.com)



Ref. No. 50085  
VERSION 6  
LAST UPDATE: 02/04/2021  
REVISION DATE: 02/04/2023

The base plate has areas where higher density ( $\pm 1.4 \text{ g/mm}^3$ ) materials have been used to reinforce parts like screw inserts, grip pole inserts, leg cushion rail, etc. The following CT image shows these areas. Attenuation factors at 6MV of these insert are 8 to 10 %.



#### F. MAINTENANCE AND WASTE MANAGEMENT

This product can be cleaned and disinfected by means of soapy water or an isopropanol based disinfectant, applied with a soft cloth. If unsure about the cleaning fluid, do not use. **Never use aerosol sprays, corrosive cleaning agents, solvents or abrasive detergents.**

Periodic checks of the product should be done to insure the parts are not worn and require repair or replacement. **Do not attempt to make repairs yourself.** Contact your distributor if there are any questions or concerns.

The product can be disposed of with household waste.

#### G. ADDITIONAL INFORMATION

For additional information such as distributor contact information, product brochures, Safety Data Sheets and regulatory information, please visit our website [www.orfit.com](http://www.orfit.com).

#### Note:

It is prohibited to make alterations to this text without prior approval from Orfit Industries. RAYCAST® is a registered trademarks of ORFIT Industries.



**ORFIT INDUSTRIES**  
Vosveld 9A | B-2110 Wijnegem | Belgium  
T (+32) (0)3 326 20 26  
[welcome@orfit.com](mailto:welcome@orfit.com)

[www.orfit.com](http://www.orfit.com)



Ref. No. 50085

VERSION 6

LAST UPDATE: 02/04/2021

REVISION DATE: 02/04/2023