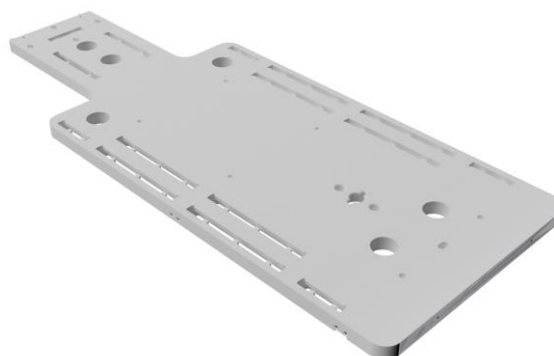


THE AIO SOLUTION® BASE PLATE IN FIBREGLASS



Article Nos. : **32301/MR**

A. GENERAL PRODUCT INFORMATION

This product is a medical device used for patient positioning and immobilisation of several anatomical regions in radiation therapy. This low density plate can be used during both the simulation and the treatment stage, including MRI simulation.

This product may only be used in combination with immobilisation masks produced by Orfit. Orfit prohibits the use of unauthorized third-party products in conjunction with its own products.

B. PRODUCT DESCRIPTION

This fibreglass BASE PLATE is the basic element of "THE TOTAL AIO SOLUTION® MRI COMPATIBLE TREATMENT PACKAGE". It is used in combination with THE AIO SOLUTION® CUSHIONS, the RAYCAST® HIGH PRECISION HEAD SUPPORTS and FIBREGLASS BLOCKS & WEDGES, and with the EFFICAST® PRE-CUTS to form a reproducible patient positioning and immobilisation device in the field of radiotherapy. Information on these other parts and instructions on how to make the masks can be found in the respective 'instructions for use' and on www.orfit.com.

C. PRECAUTIONS FOR USE

This is a fragile product, please handle with care. Always place the base plate on a flat surface. Clear the treatment table of any debris before positioning the base plate. Always fix the base plate securely to the treatment couch before positioning a patient. More information on how to fix this base plate to a couch top can be found on our website <http://www.orfit.com/en/fixation-devices/>.

If the baseplate is used in overhang over the couch, a Table Fix (art. no. 35744/6) (NOT MRI compatible) or iBeam couch fixation (art. no. 32813) needs to be used at the caudal end to secure the baseplate to the couch top. This prevents the baseplate from falling off the table when the patient moves.

The fibreglass base plate is constructed to be light in weight and to have superb dosimetric properties. When handled roughly, it may get damaged and fibres may come off. When this happens, stop using the base plate to prevent fibres from getting in contact with the patient's or user's skin. Contact your distributor.

A patient set-up form for each treatment area is available on the Orfit website.

D. STORAGE

Always store the product in a safe place to prevent it from getting damaged or falling onto other objects. Take care not to damage the edges of the plate when storing it in an upright position. Prevent hard objects from falling onto the plate.

Store the base plate between +10°C (50°F) and 40°C (122°F).

E. PROPERTIES

E.1. Physical Properties

Dimensions: L 1350 mm x W 544 mm x H 30 mm

Weight: 5.1 kg

This plate is made from a foam core with glass fibre top and bottom surfaces. Edges are epoxy resin. Other inserts are made from hardwood/epoxy. No metals are used.



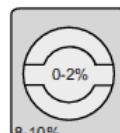
E.3. Dosimetric Properties

The general attenuation factor ($\pm 0.15\%$) for the Base Plate is as follows:

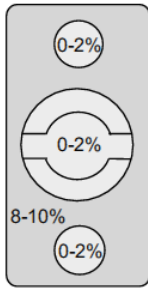
6 Mv	1.6 %
15 Mv	1.0 %
Skin build-up	4.40 mm

The Base Plate has areas where higher density ($\pm 1.4 \text{ g/mm}^3$) materials have been used to reinforce parts like screw inserts, grip pole inserts and the leg separator insert. The drawing on the next page shows these areas and below the corresponding attenuation factors at 6MV are listed.

- 1) fixation screw inserts $\varnothing 1 \text{ cm}$: 8-11 %
- 2) grip pole inserts:



- 3) fixation screw inserts (blocks of 30x30x30mm): 8-11 %
- 4) leg separator insert:



- 5) table fix tunnel (runs across the base plate): 5-7 %
- 6) edge of pelvic slots: 8-11 %

Note: Use these numbers as a guidance only. Perform the measurements again in your department to verify these results.

F. MAINTENANCE AND WASTE MANAGEMENT

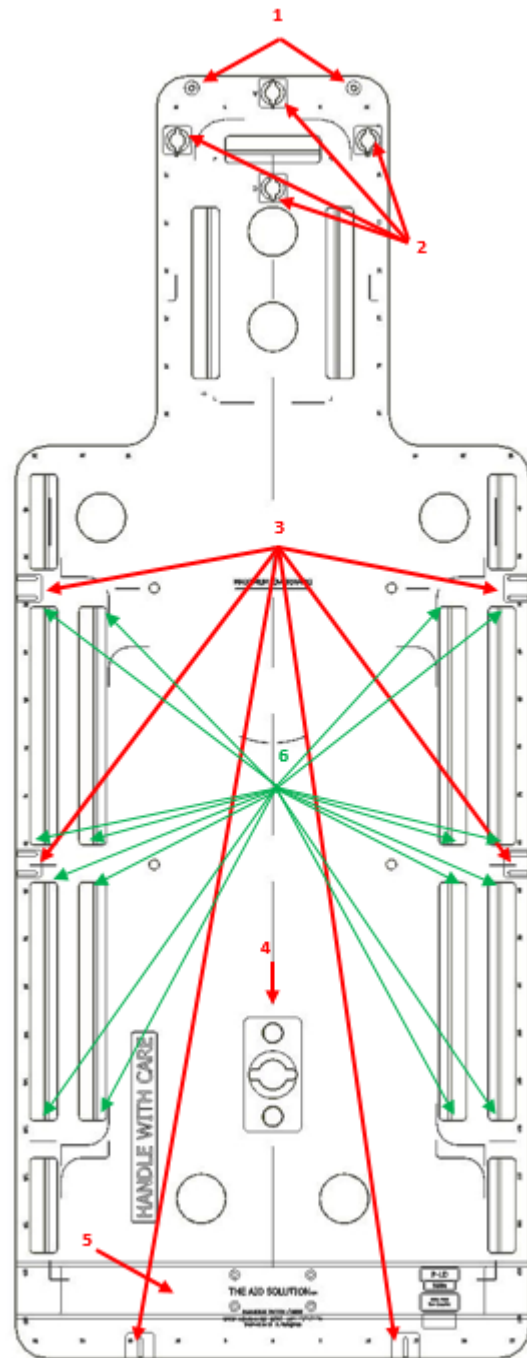
This product can be cleaned and disinfected by means of soapy water or an isopropanol based disinfectant, applied with a soft cloth. If unsure about the cleaning fluid, do not use. **Never use aerosol sprays, corrosive cleaning agents, solvents or abrasive detergents.**

Periodic checks of the product should be done to insure the parts are not worn and require repair or replacement. **Do not attempt to make repairs yourself.** Contact your distributor if there are any questions or concerns.

The product can be disposed of with household waste.

G. ADDITIONAL INFORMATION

For additional information such as distributor contact information, product brochures, Safety Data Sheets and regulatory information, please visit our website www.orfit.com.



Note:

It is prohibited to make alterations to this text without prior approval from Orfit Industries. RAYCAST®, EFFICAST® and THE AIO SOLUTION® are registered trademarks of Orfit Industries.



ORFIT INDUSTRIES
 Vosveld 9A | B-2110 Wijnegem | Belgium
 T (+32) (0)3 326 20 26
 welcome@orfit.com

www.orfit.com



Ref. No. 50176
 VERSION 1
 LAST UPDATE: 13/04/2021
 REVISION DATE: 13/04/2023