

# IMRT Thorax Phantom

- Verify heterogeneity corrections
- Correlate CTU to electron density
- Check dose distributions in sensitive areas
- Check depth doses and absolute dose
- 2D and 3D isodoses
- Calibrate film with ion chamber and other detectors
- Designed to accommodate additional, optional breast attachments



## Complete QA from CT Imaging to Dose Verification

The CIRS Model 002LFC IMRT Thorax Phantom for film and ion chamber dosimetry is designed to address the complex issues surrounding commissioning and comparison of treatment planning systems and complete system QA from CT imaging to dose verification. Once the only way to do IMRT/VMAT QA, phantoms like the 002LFC are used today for more intensive investigations especially during commissioning, research and end-to-end testing.

## Tissue Equivalent Technology

The 002LFC is elliptical in shape and properly represents an average human torso in proportion, density and two-dimensional structure. It measures 30 cm long x 30 cm wide x 20 cm thick. The phantom is constructed of proprietary tissue equivalent epoxy materials. Linear attenuations of the simulated tissues are within 1% of actual attenuation for water and bone, and within 3% for lung from 50 keV to 15 MeV.

Tissue equivalent interchangeable rod inserts accommodate ionization chambers allowing for point dose measurements in multiple planes within the phantom. Hole placement allows verification in the most critical areas of the chest. One half of the phantom is divided into 12 sections, each 1 cm thick, to support radiographic or GafChromic® film. Additional inserts are available to support a variety of other detectors including TLD's, MOSFET, and diodes.

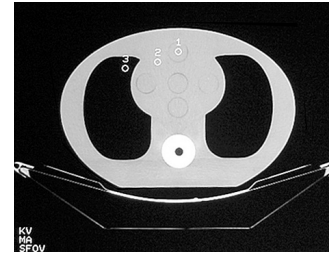
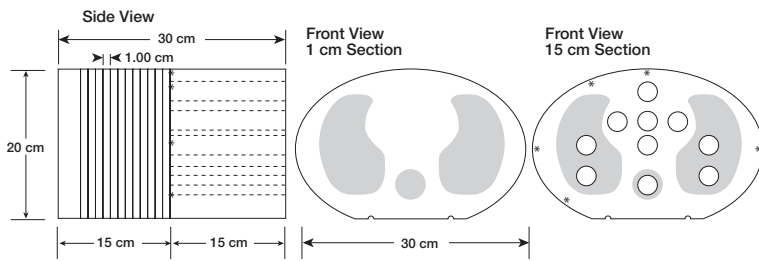
## Intuitive Setup

Handling, assembly and proper orientation of the phantom is easy with the use of a unique alignment base and holding device. The surfaces of the phantom are marked for ease of laser alignment. CT markers are included to ensure accurate film to plan registration on the center film.\*

\*The CIRS line of IMRT phantoms is compatible with the RIT 113 software for film to plan analysis. GafChromic® is a registered trademark of International Specialty Products, Wayne, NJ.

## IMRT Verification and End-to-End Solution

CIRS IMRT phantoms are manufactured from tissue equivalent materials that mimic within 1% from 50 keV to 15 MeV for accurate simulation during all necessary steps of IMRT verification. The interchangeable rod design allows the phantom to accommodate many dose measurement devices such as ion chambers, TLD, diodes and MOSFET's in the same location within the phantom. Phantom cross sections accommodate GafChromic® film.



### Specifications

<b>Dimensions</b>	43.2 cm x 38.1 cm x 22.9 cm (17" x 15" x 9")
<b>Weight</b>	30 lbs (11.2 kg)
<b>Materials</b>	Phantom Body: Tissue Equivalent Epoxy Materials Inserts: CIRS Tissue Equivalent Materials (epoxy resin based)

### Insert Options

Part No.	Description
<b>002RW-CVXX-XX</b>	Water equivalent rod insert with ion chamber cavity
<b>002RB-CVXX-XX</b>	Bone equivalent insert with ion chamber cavity
<b>002RL-CVXX-XX</b>	Lung equivalent insert with ion chamber cavity

\*Customers must complete their order with the purchase of at least one (1) insert option listed below. For best results, the full set is recommended. Refer to separate CIRS cavity and plug code list for available chamber cavities.

### Items Included with CIRS Model 002LFC

Quantity	Description
1	Thorax section drilled to accommodate rod inserts
12	1 cm thorax sections
1	3 cm end section
5	Water equivalent solid rod inserts (002RW-S)
1	Bone equivalent solid rod insert (002RB-S)
4	Lung equivalent solid rod inserts (002RL-S)
1	Set of CT to film fiducial markers
1	Alignment base
1	Holding device
1	User guide

### Optional Accessories

Part No.	Description
<b>002BR-2PK</b>	Set of 350cc breast attachments, predrilled in a 3 cm x 3 cm grid to accommodate 8 TLD detectors
<b>002FC</b>	Film Stack for small volume 3D image reconstruction
<b>002HCV</b>	Homogeneous section that accommodates 002FC or 002GC cassettes
<b>002LCV</b>	Thorax region section that accommodates 002FC or 002GC cassettes
<b>002SPH</b>	Water equivalent rods for TLD's (set of 5 rods length 5cm)
<b>002ED</b>	Electron density reference plugs, set of 4 (lung, bone, muscle, adipose)
<b>9501</b>	Case for IMRT Phantoms (002H9K, 002LFC, 002PRA) when ordered with corresponding Cavity Slab (002HCV, 002LCV, 002PCV)
<b>9502</b>	Case for IMRT Phantoms (002H9K, 002LFC, 002PRA)
<b>158200-09</b>	Precision Cut EBT3 Film Kit for Model 002FC (Set of 25 inserts plus 6 calibration strips)